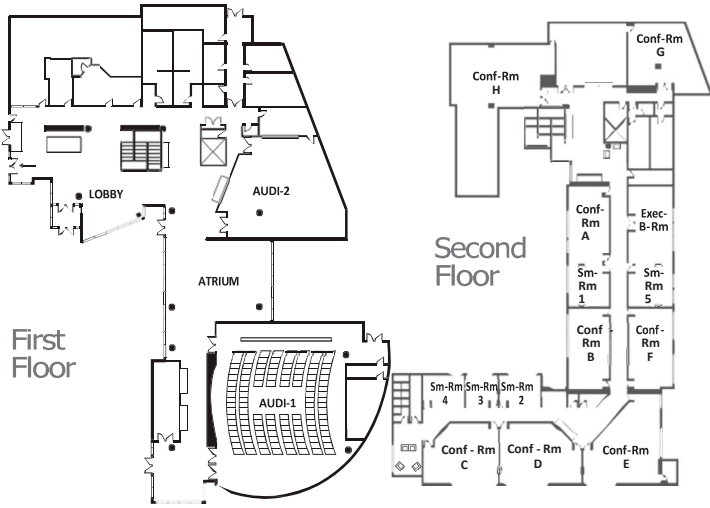


EAGLE CREST

HOTEL • GOLF • CONFERENCE CENTER

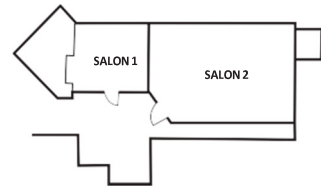
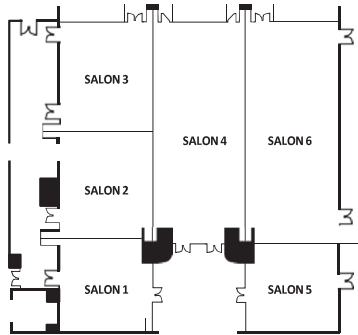
1275 South Huron Street, Ypsilanti, MI 48197 734-487-2000

EAGLE CREST CONFERENCE CENTER

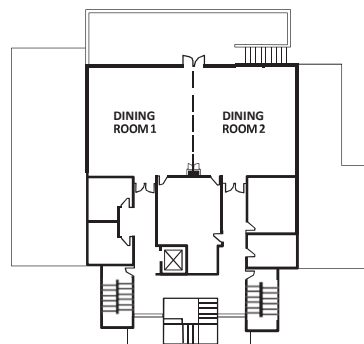


Roy E. Wilbanks BALLROOM

ELIZABETH ANN BALLROOM



CLUBHOUSE



eaglecrestresort.com



	Size	Square Feet	Feet High	Theatre	Classroom	Conference	Hollow Sq.	U-Shape	Banquet Rds-8	Reception
Roy E. Wilbanks BALLROOM										
Without Function		8992		1000	500				640	1300
With Function	104' x 93'	9672								
Salon 1 or 5	31' x 31'	960	11' / 9.4'	90	45	28	42	33	64	100
Salon 2	36' x 31'	1115	15' / 11.6'	94	55	34	48	33	72	120
Salon 3	37' x 31'	1147	15' / 11.6'	94	55	34	48	33	72	120
Salon 4 or 6	73' x 31'	2260	15' / 11.6'	208	100	30	84	60	144	230
SALON COMBINATIONS										
Salon 1 & 2	67' x 31'	2077		249	144	N/A	78	60	136	210
Salon 2 & 3	73' x 31'	2260		279	100	N/A	78	60	136	230
Salon 1,2 & 3	104' x 31'	3224		365	216	N/A	N/A	N/A	232	330
Salon 5 & 6	104' x 31'	3224		365	210	N/A	N/A	N/A	240	330
Salon 2,3 & 4	73' x 62'	4526		492	306	N/A	N/A	N/A	328	460
Salon 4 & 6	73' x 62'	4526		498	312	N/A	N/A	N/A	336	460
Salon 2,3,4&6	73' x 93'	6790		808	462	N/A	N/A	N/A	496	670
ELIZABETHANN BALLROOM										
Salon 1	28' x 27'	750		50	20	20	10	15	40	60
Salon 2	35' x 50'	1700		100	75	30	40	30	96	240
Salon 1 & 2		2500		140	90	25	N/A	35	136	300
GARDEN MARQUEE	60' x 80'	4800		300	N/A	N/A	N/A	N/A	180	350
GARDEN TERRACE		250		250	N/A					
GOLF DINING ROOM 1 & 2		1700		100	80	48		50	120	180
GOLF DINING ROOM 1 or 2		850		50	40	24		24	48	90
CONF. ROOM										
A	19' x 36'	691		55	42	30	34	28	40	
B	19' x 35'	685		55	42	30	34	28	40	
C	29' x 36'	951		60	60	30	34	30	48	
D	29' x 37'	956		60	60	30	34	30	48	
E	37' x 40'	1129		70	51	30	34	30	56	
F	19' x 35'	688		55	42	30	34	28	40	
G	23' x 38'	709		40	30	18	22	22	24	
H	48' x 66'	1752		45	45	36	34	33	40	
SEMINAR ROOM										
1	19' x 19'	373		25	18	18	20	14	16	
2	11' x 18'	184							8	
3	11' x 14'	156							8	
4	11' x 21'	243		15	9	12			8	
5	19' x 19'	376		25	18	18	20	14	16	
AUDITORIUM # 1	77' x 68'	2770		Arm-200						
AUDITORIUM # 2	61' x 42'	1991		160	95	40	40	35	96	
EXECUTIVE BOARDROOM	19' X 36'	592		CONFERENCE TABLE WITH 20 EXECUTIVE CHAIRS						